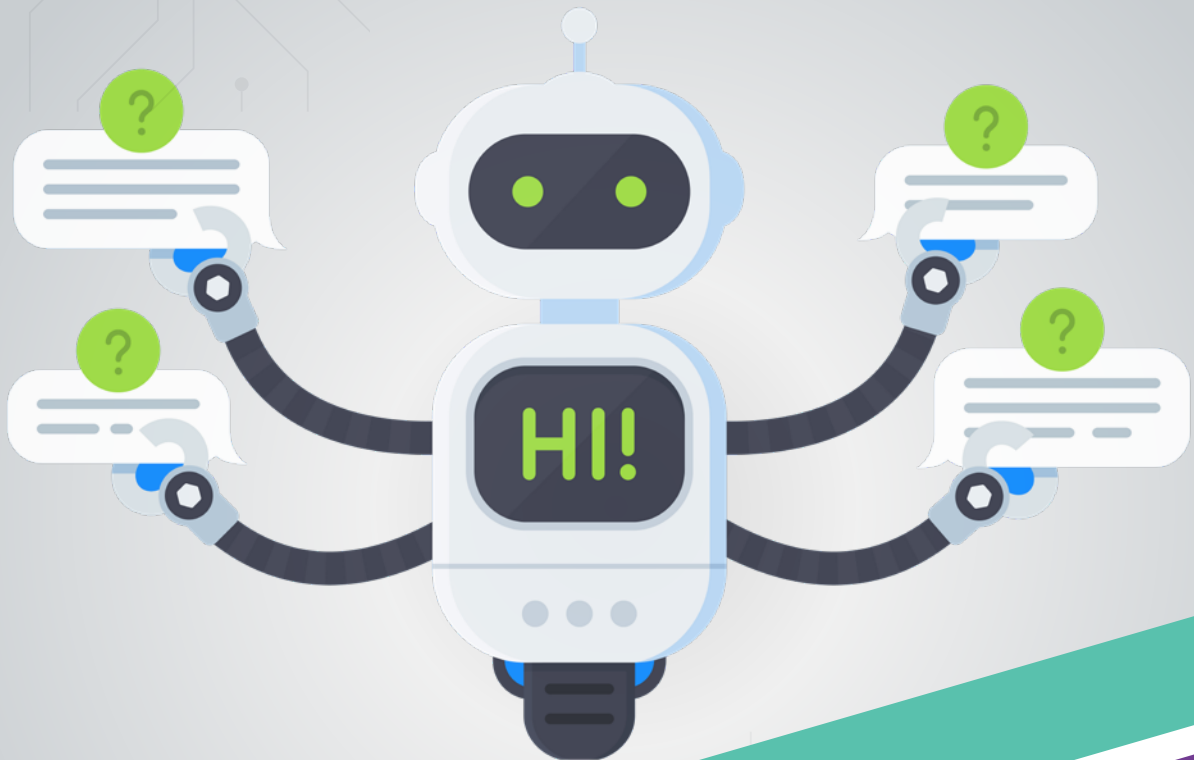
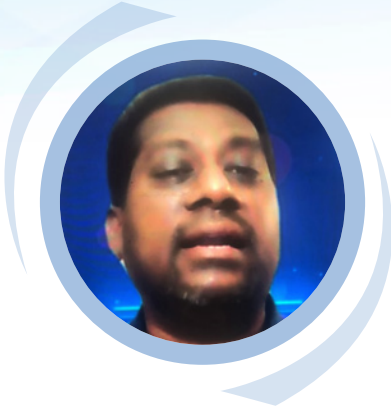


# CONVERSATIONAL ARTIFICIAL INTELLIGENCE



Learning Level: **Foundation**

Your first step towards building self-learning Robots



## Author

# Jothi Periasamy

Co-Founder | DeepSphere.AI

Board Member | University of California

Board Member, Chief Data Scientist & Lead Instructor  
University of California  
Silicon Valley & Davis, CA, USA

Artificial Intelligence Learning Facilitator  
MIT CSAIL & MIT Sloan  
Boston, MA, USA

Head of Artificial Intelligence  
Experfy (Harvard Innovation Lab)  
Boston, MA, USA

Academic Council for AI  
Universiti Tenaga Nasional University  
Selangor, Malaysia

- 17+ years of management consulting and end-to-end AI (ML, DL, RPA, NLP) experience with Deloitte, E&Y, and KPMG
- Over 50+ clients across industries: Retail, Consumer, Health, Energy, Oil & Gas
- Teaches AI at MIT – Head of AI, Architect at Experfy, Harvard Innovation Lab
- Co-innovates industry solution along with SAP America
- Published on finance, AI, Big Data, IIoT, Cloud, and SAP Appliances
- Delivered many real-time research projects. Globally recognized as a keynote speaker at around 50+ conferences
- Recently invited by Prime Minister's office of Dubai, Malaysia, and Montreal
- Stanford alumni

## SOURCE CODE ORGANIZATION IN

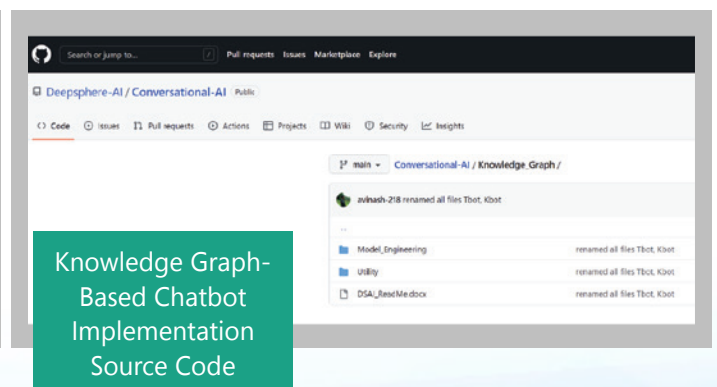
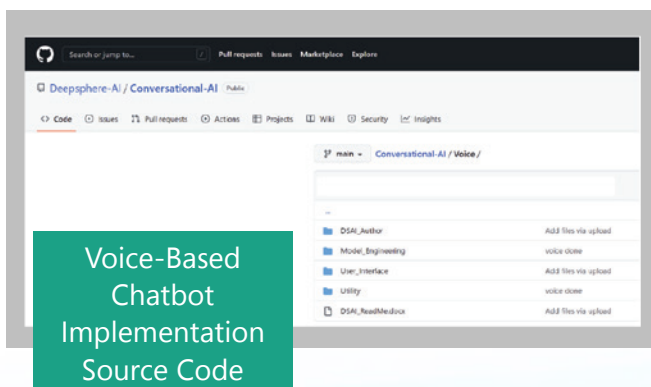
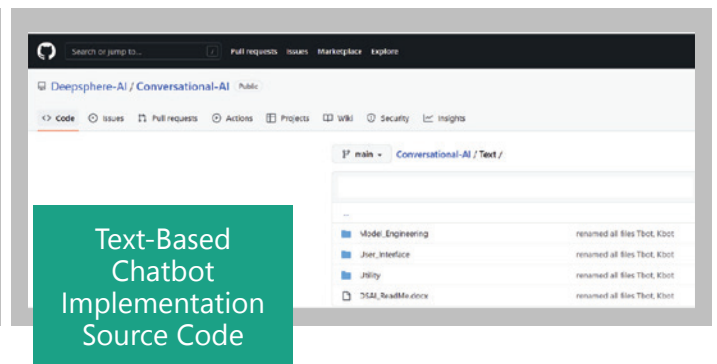
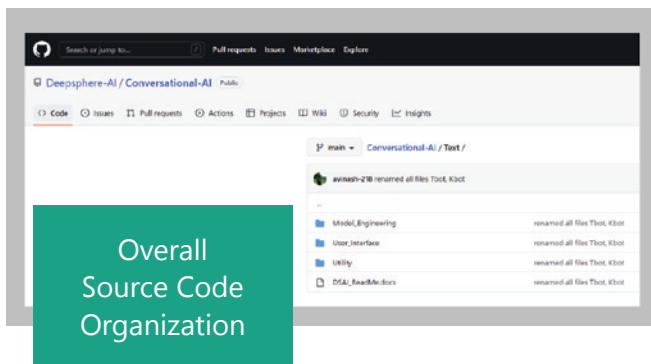
- **Public Access:** We are sharing the entire source code for anyone interested in exploring this further. The source code is written in Python, and its ecosystem and the learning level to understand this source code and the implementation is foundational.
- **Readme File:** We also provide a readme file with adequate details for the learner to better understand the source code, its dependency, and the commands to run the applications.

GitHub  
URL

<https://github.com/JothiPeriasamy/CPG-Conversational-AI-Text-Voice-KG>

REPO

Repository Name: **/CPG-Conversational-AI-Text-Voice-KG/**



# YOUR FIRST STEP TO LEARN CONVERSATIONAL ARTIFICIAL INTELLIGENCE

Conversational artificial intelligence is developed based on text, voice, and knowledge graphs. This guide provides adequate details to understand all three approaches and develop industrial conversational intelligent solutions using machine learning models for business.

